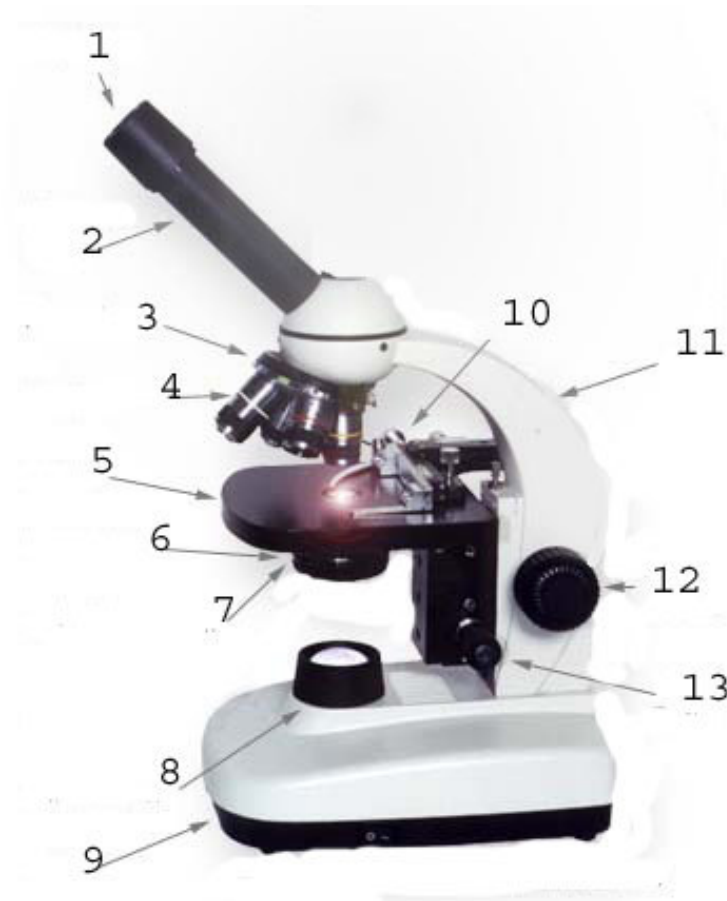


Name \_\_\_\_\_

## Microscope License Test

**INSTRUCTIONS:** Write your answers *on your answer sheet* in the blanks corresponding to each question.

(In blanks 1-13 on your answer sheet, label the names of microscope parts 1-13 of the diagram below.)



**Answer questions 14- 25 below in blanks # 14-25 on your answer sheet.**

14. The bottom of the microscope, used for support, is called the \_\_\_\_
15. When first examining a subject under the microscope, use the \_\_\_\_ power objective first.
16. The lens at the top of the microscope, through which you look, is the \_\_\_\_.
17. When focusing, use the \_\_\_\_ adjustment knob first.

18. A light source, used in place of a mirror, is called the \_\_\_\_.
19. The \_\_\_\_ hold the slide in place.
20. When carrying the microscope, hold it with two hands by the \_\_\_\_ and the base.
21. The \_\_\_\_ varies the amount of light which enters the objective lenses.
22. The \_\_\_\_ holds two or more lenses and can be rotated.
23. If the **eyepiece** of a compound microscope has a magnification of **10x**, and the **objective lens** which are using is **40x**, the **resulting magnification** of the specimen is \_\_\_\_.
24. **True or False:** The proper way to use a monocular microscope is to look through the eyepiece with one eye closed tightly.
25. When you **move your slide to the right**, the **image** you see under the microscope appears to move to the \_\_\_\_.

Name \_\_\_\_\_

### Answer Sheet for Microscope License Test

1. \_\_\_\_\_

14. \_\_\_\_\_

2. \_\_\_\_\_

15. \_\_\_\_\_

3. \_\_\_\_\_

16. \_\_\_\_\_

4. \_\_\_\_\_

17. \_\_\_\_\_

5. \_\_\_\_\_

18. \_\_\_\_\_

6. \_\_\_\_\_

19. \_\_\_\_\_

7. \_\_\_\_\_

20. \_\_\_\_\_

8. \_\_\_\_\_

21. \_\_\_\_\_

9. \_\_\_\_\_

22. \_\_\_\_\_

10. \_\_\_\_\_

23. \_\_\_\_\_

11. \_\_\_\_\_

24. \_\_\_\_\_

12. \_\_\_\_\_

25. \_\_\_\_\_

13. \_\_\_\_\_

